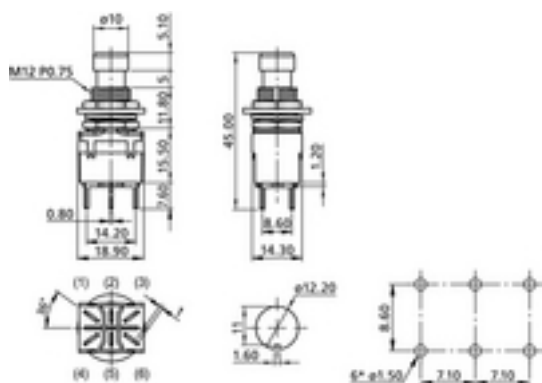
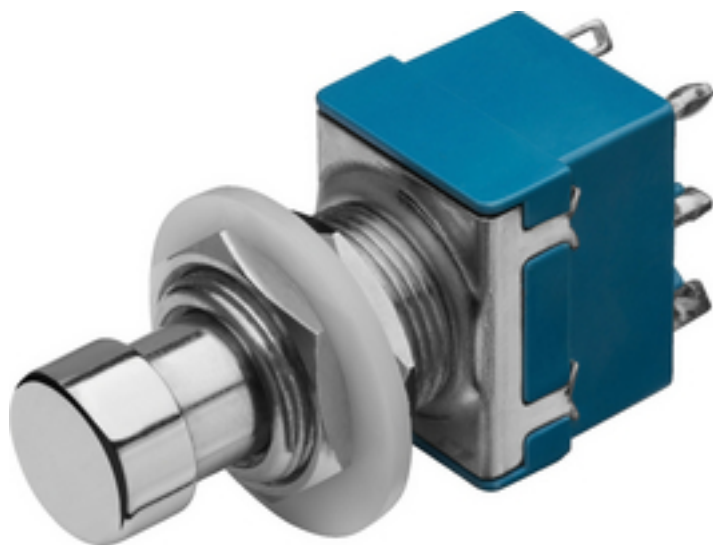


# FS-35 - Foot Push Switch

**new**



Momentary foot switch

- 2 x ON/(ON)
- For hole  $\varnothing$  12 mm
- For safety extra-low voltage or signal voltage

## Tekniske data

Description	: foot switch
Type	: for safety extra-low voltage or signal voltage
Wafers	: -
Contacts	: -
Switching function	: 2 x ON/(ON)
Switch positions	: -
Power rating	: -
PC spacing	: -
Colour/colour coding	: -
Mounting hole	: $\varnothing$ 12 mm
Mounting depth	: -
Dimensions	: 14.3 x 45 x 18.9 mm
Weight	: 19 g