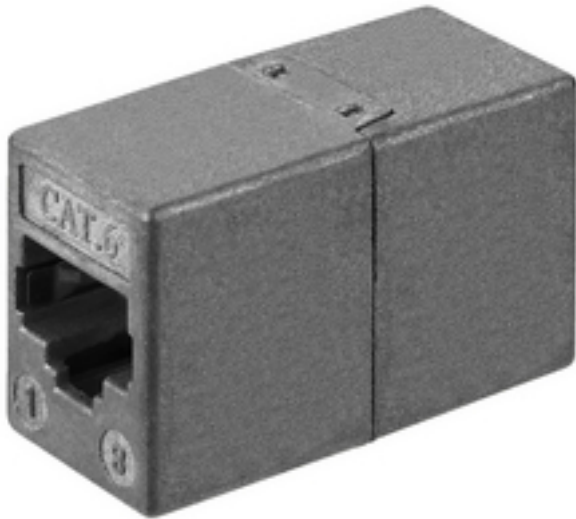


CAT-6C - CAT6 Adaptor



Cat. 6 dual inline jack

- For extending Cat. 6 network cables as required
- Fitted with RJ45 jacks on both ends
- Fully wired (all 8 poles)
- Diecast metal housing, with shielding

Image similar.

Tekniske data

Description	: dual inline jack
Type	: Cat. 6
Quantity	: 1
Features	: 8 poles, shielded
Colour/colour coding	: -
Power rating	: -
Insulating resistance	: -
Dielectric strength	: -
Certification	: -
Pole number	: -
Cable inlet	: -
Suitable cable cross section	: -
Connection	: 2 x RJ45 jack
Strain relief	: -
Cable bending protection	: -
Stereo	: -
Mono	: -
Switches	: -
Material	: diecast metal
Central fixing	: -
Contact type	: -
No. of contacts	: -
Contact width	: -
Contact distance	: -
Admiss. ambient temp.	: -
Dimensions	: -
Diameter	: -
Length	: -
Weight	: 37 g
Other features	: for extending Cat. 6 cables