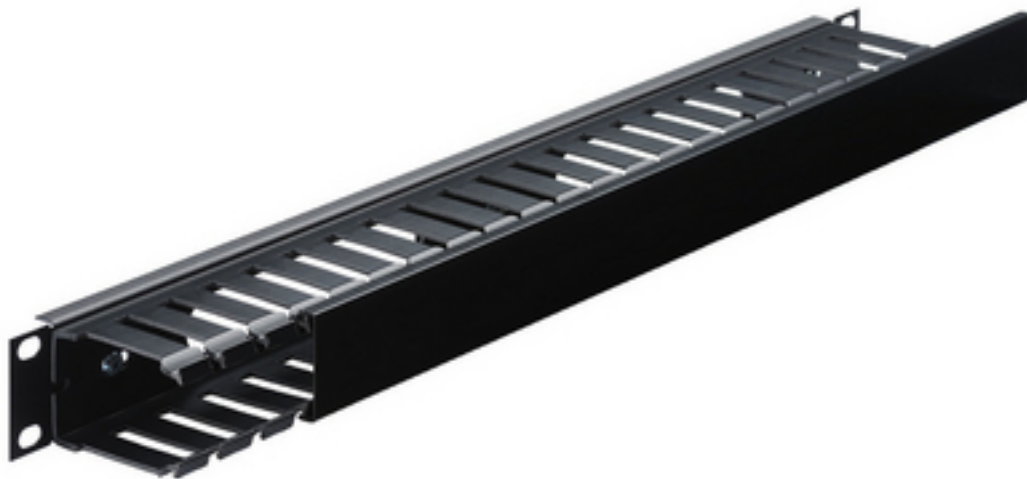


RWM-1D - Cable Management



Rack-mount cable duct, 1 RS

for horizontal cable management in 482 mm (19") racks, e.g. RACK-42NV, RACK-33NV, RACK-21NV, RACK-15NV.

- Metal rack panel, black powder-coated (standard RAL 9005)
- Panels with oval apertures for cable routing from the front to the back
- Black plastic cable duct with vertical apertures for cable diameters up to 8 mm
- Dimensions: 482 x 44 x 70 mm

Tekniske data

Intended use/capacity	: rack-mount cable duct
Size	: 482 mm (19")
Rack spaces, RS	: 1
Colour	: black powder-coated (RAL 9005)
Version	: for RACK-42NV, RACK-33NV, RACK-21NV, RACK-15NV
Material	: metal
Castors	: -
Mounting accessories	: -
Protective class	: -
Inside dimensions	: -
Usable depth	: -
Width	: 482 mm
Height	: 44 mm
Depth	: 70 mm
Max. load capacity	: -
Weight	: 367 g