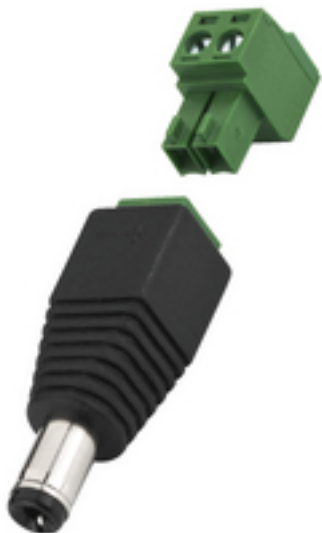


T-521PST - Low Voltage Plug



Low-voltage connector, 5.5/2.1 mm

- For quickly installing e.g. surveillance cameras, LED strips and LED bars
- With plug-in screw terminal and polarity identification

Tekniske data

| | |
|------------------------------|---------------------------|
| Description | : plug |
| Type | : low-voltage |
| Quantity | : 1 |
| Features | : - |
| Colour/colour coding | : black, chrome |
| Power rating | : - |
| Insulating resistance | : - |
| Dielectric strength | : - |
| Certification | : - |
| Pole number | : - |
| Cable inlet | : - |
| Suitable cable cross section | : - |
| Connection | : plug-in screw terminal |
| Strain relief | : - |
| Cable bending protection | : - |
| Stereo | : - |
| Mono | : - |
| Switches | : - |
| Material | : - |
| Central fixing | : - |
| Contact type | : - |
| No. of contacts | : - |
| Contact width | : - |
| Contact distance | : - |
| Admiss. ambient temp. | : 0-40 °C |
| Dimensions | : - |
| Diameter | : 5.5/2.1 Å mm |
| Length | : - |
| Weight | : 5.6 g |
| Other features | : polarity identification |