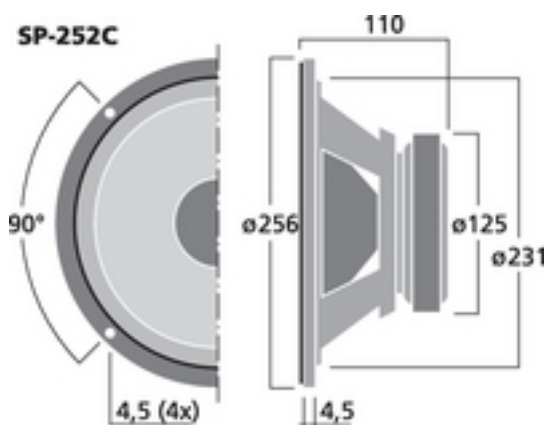
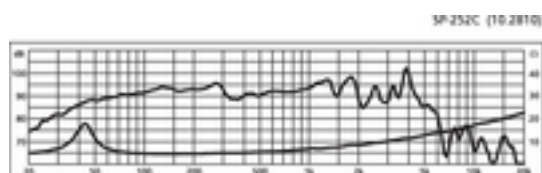
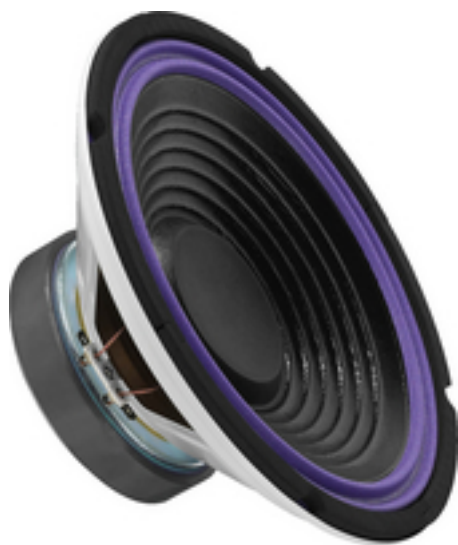


SP-252C - Car Woofer

200
W_{MAX}

10



Car hi-fi bass speaker, 100 W, 40hm

- 25 cm (10") bass speaker
- Coated cone
- Also suitable as a bass addition for free air applications
- Protruding lower pole plate for a long excursion

Tekniske data

| | |
|---|--------------------------------------|
| Impedance (Z) | : 4 Ohm |
| Transmission method | : - |
| Frequency range | : f3-3,500 Hz |
| Resonant frequency (fs) | : 35 Hz |
| Rec. crossov. frequ. (fmax.) (12 dB/oct.) | : 2,000 Hz |
| Power rating (RMS) | : 100 W |
| Peak music power output (MAX) | : 200 W |
| Sensitivity | : 93 dB/W/m |
| Max. rated SPL | : - |
| Max. voltage | : - |
| Radiation angle, horizontal | : - |
| Radiation angle, vertical | : - |
| Suspension compl. (Cms) | : 0.55 mm/N |
| Moving mass (Mms) | : 38 g |
| Mech. Q factor (Qms) | : 3.15 |
| Electr. Q factor (Qes) | : 0.47 |
| Total Q factor (Qts) | : 0.41 |
| Equivalent volume (Vas) | : 96 l |
| DC resistance (Re) | : 3.7 Ohm |
| Force factor (BxL) | : 8.08 Tm |
| Voice coil induct. (Le) | : 0.4 mH |
| Voice coil diameter | : $\varnothing \sim 39$ mm |
| Voice coil former | : aluminium |
| Linear excursion (X _{MAX}) | : ± 5 mm |
| Eff. cone area (Sd) | : 353 cm ² |
| Magnet weight | : 850 g |
| Magnet diameter | : $\varnothing \sim 125$ mm |
| Mounting cutout | : $\varnothing \sim 231$ mm |
| Mounting depth | : 110 mm |
| Mounting hole diameter | : - |
| Hole spacing X-axis | : - |
| Hole spacing Y-axis | : - |
| Dimensions | : $\varnothing \sim 256$ mm x 110 mm |
| Outside diameter | : $\varnothing \sim 256$ mm |
| Width | : $\varnothing \sim 256$ mm |



| | |
|-----------------------|-----------|
| Height | : - |
| Depth | : 110 mm |
| Protective class | : - |
| Admiss. ambient temp. | : 0-40 °C |
| Weight | : 2.4 kg |
| Packing unit | : 1 |
| Type of speaker | : 10" |