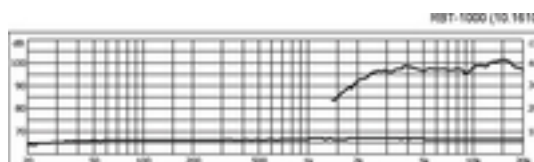
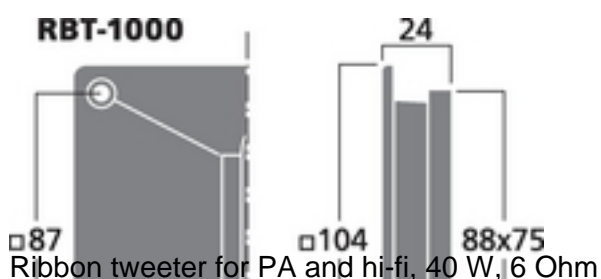
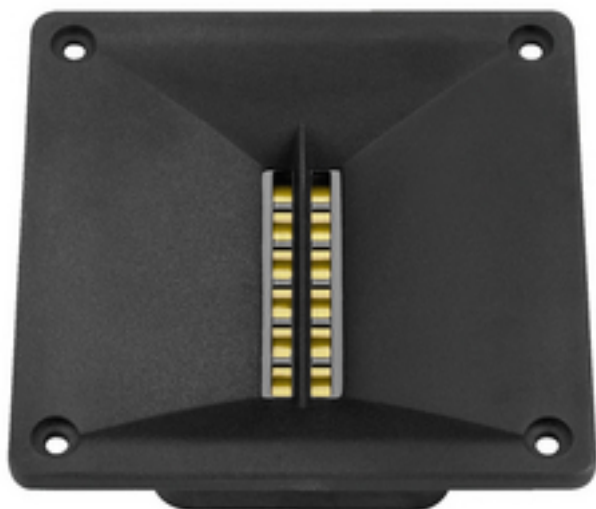


RBT-1000 - Ribbon Tweeter

80
W_{RMS}



- Magnetostatic speaker with waveguide
- Tweeter system from the L-RAY/1000
- Fine and brilliant reproduction of the high frequencies
- For use from 3,000 Hz (hi-fi) or 4,000 Hz (PA) on via 18 dB filter
- Diecast aluminium horn front attachment, neodymium magnet
- Vertical or horizontal mounting possible due to square front panel

Tekniske data

| | |
|---|-------------------------|
| Impedance (Z) | : 6 Ohm |
| Transmission method | : - |
| Frequency range | : fx-22,000 Hz |
| Resonant frequency (fs) | : 1.6 kHz |
| Rec. crossov. frequ. (fmax.) (12 dB/oct.) | : ? 2,500 Hz |
| Power rating (RMS) | : 40 W |
| Peak music power output (MAX) | : 80 W |
| Sensitivity | : 96 dB/W/m |
| Max. rated SPL | : - |
| Max. voltage | : - |
| Radiation angle, horizontal | : - |
| Radiation angle, vertical | : - |
| Suspension compl. (Cms) | : - |
| Moving mass (Mms) | : - |
| Mech. Q factor (Qms) | : - |
| Electr. Q factor (Qes) | : - |
| Total Q factor (Qts) | : - |
| Equivalent volume (Vas) | : - |
| DC resistance (Re) | : - |
| Force factor (BxL) | : - |
| Voice coil induct. (Le) | : - |
| Voice coil diameter | : - |
| Voice coil former | : - |
| Linear excursion (X _{MAX}) | : - |
| Eff. cone area (Sd) | : - |
| Magnet weight | : - |
| Magnet diameter | : magnetostatic speaker |
| Mounting cutout | : 94 x 94 mm |
| Mounting depth | : 24 mm |
| Mounting hole diameter | : - |
| Hole spacing X-axis | : 87 mm |
| Hole spacing Y-axis | : 87 mm |
| Dimensions | : 104 x 104 x 24 mm |
| Outside diameter | : - |
| Width | : 104 mm |



| | |
|-----------------------|-----------|
| Height | : 104 mm |
| Depth | : 24 mm |
| Protective class | : - |
| Admiss. ambient temp. | : 0-40 °C |
| Weight | : 0.24 kg |
| Packing unit | : 1 |
| Type of speaker | : - |