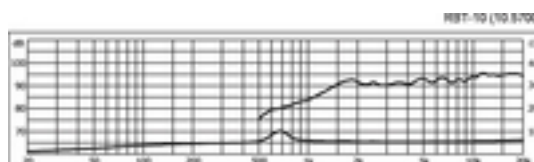
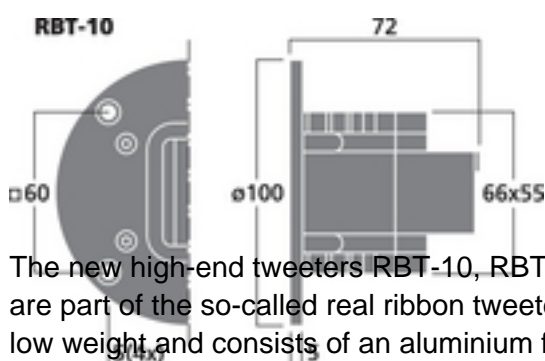
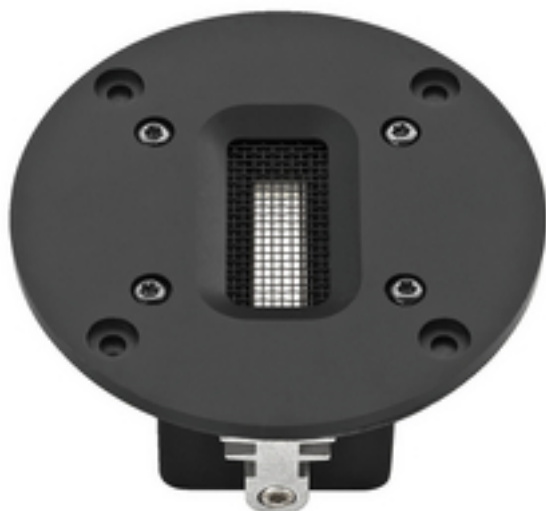


## RBT-10 - HiFi Ribbon Tweeter Pair

25  
W<sub>RMS</sub>

PAAR  
PAIR



The new high-end tweeters RBT-10, RBT-20 and RBT-35SR

are part of the so-called real ribbon tweeters. The audio signal flows through the entire cone which is of extra low weight and consists of an aluminium film. A built-in high-quality transformer converts the low impedance of this cone into 5-8 Ohm which is non-critical for the amplifier. Ribbon tweeters impress by an extra fine and brilliant reproduction of the high frequency range. Due to continuous further development, it is already possible to use these ribbon tweeters with crossover frequencies from 2,500 Hz on, depending on the type. This makes them a top choice whenever hi-fi speakers or studio monitors of the highest quality are required. Ribbon tweeters require a crossover network for operation!

Pair of high-end ribbon tweeters, matched, 12 W, 5 Ohm

- Real ribbon tweeter with neodymium magnet system and transformer
- Fine and brilliant reproduction of the high frequencies
- Smooth, unembossed aluminium sandwich cone: 8 x 38 x 0.015 mm
- For use from 3,500 Hz on via 18 dB filter
- Robust aluminium front panel with waveguide and protective grille

## Tekniske data

Impedance (Z)	: 5 Ohm
Transmission method	: -
Frequency range	: 2,000-40,000 Hz
Resonant frequency (fs)	: -
Rec. crossov. frequ. (fmax.) (12 dB/oct.)	: ? 4,000 Hz
Power rating (RMS)	: 12 W
Peak music power output (MAX)	: 25 W
Sensitivity	: 90 dB/W/m
Max. rated SPL	: -
Max. voltage	: -
Radiation angle, horizontal	: -
Radiation angle, vertical	: -
Suspension compl. (Cms)	: -
Moving mass (Mms)	: -
Mech. Q factor (Qms)	: -
Electr. Q factor (Qes)	: -
Total Q factor (Qts)	: -
Equivalent volume (Vas)	: -
DC resistance (Re)	: -
Force factor (BxL)	: -
Voice coil induct. (Le)	: -
Voice coil diameter	: -
Voice coil former	: -
Linear excursion (X <sub>MAX</sub> )	: -
Eff. cone area (Sd)	: -
Magnet weight	: -
Magnet diameter	: neodymium rods
Mounting cutout	: 66 x 55 mm
Mounting depth	: 72 mm
Mounting hole diameter	: -
Hole spacing X-axis	: 60 mm
Hole spacing Y-axis	: 60 mm
Dimensions	: Å~ 100 mm x 72 mm
Outside diameter	: Å~ 100 mm
Width	: Å~ 100 mm



Height	: -
Depth	: 72 mm
Protective class	: -
Admiss. ambient temp.	: 0-40 °C
Weight	: 0.87 kg
Packing unit	: 1
Type of speaker	: -