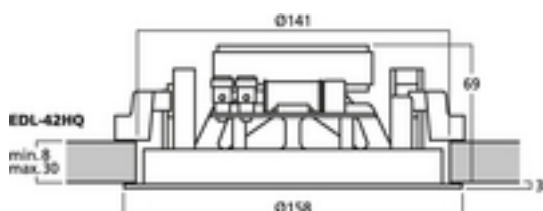
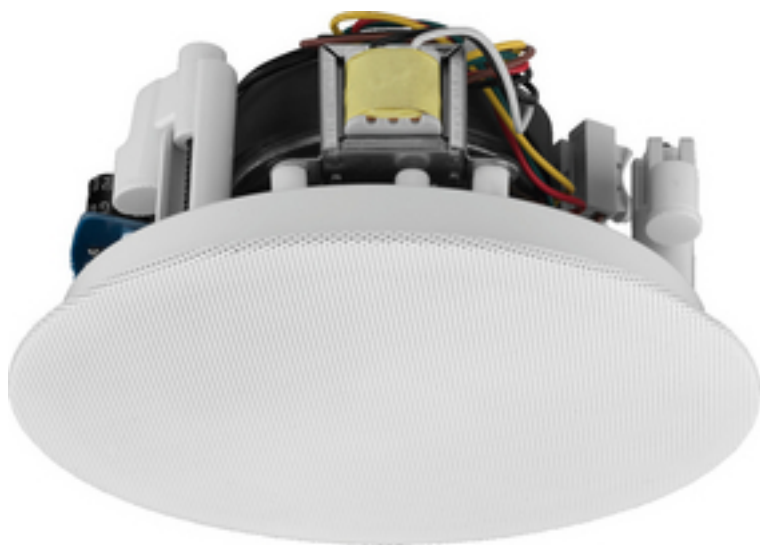


EDL-42HQ - PA Loudspeaker



Hi-fi wall and ceiling speaker, 15 W

- 100 V line technique or 8 Ohm operation
- Power taps: 100 V (8/4/2/1 W)
- 2-way version with coaxial dome tweeter
- 10 cm (4") bass speaker with waveguide and 20 mm (3/4") silk dome
- Pivoting tweeter via ball joint
- Excellent sound characteristics
- Supplied with 2 stylish protective metal grilles for an individual look
- Protective grille to be magnetically attached
- For a wall thickness/ceiling thickness from 8 to 30 mm

Tekniske data

Impedance (Z)	: 8 Ohm
Transmission method	: 100 V or low-impedance
Frequency range	: 70-20,000 Hz
Resonant frequency (fs)	: 70 Hz
Rec. crossov. frequ. (fmax.) (12 dB/oct.)	: -
Power rating (RMS)	: 15 W (8 Ohm) 8/4/2/1 W (100 V)
Peak music power output (MAX)	: 30 W
Sensitivity	: 85 dB/W/m
Max. rated SPL	: 96 dB
Max. voltage	: -
Radiation angle, horizontal	: -
Radiation angle, vertical	: -
Suspension compl. (Cms)	: -
Moving mass (Mms)	: -
Mech. Q factor (Qms)	: -
Electr. Q factor (Qes)	: -
Total Q factor (Qts)	: -
Equivalent volume (Vas)	: -
DC resistance (Re)	: -
Force factor (BxL)	: -
Voice coil induct. (Le)	: -
Voice coil diameter	: -
Voice coil former	: -
Linear excursion (X _{MAX})	: -
Eff. cone area (Sd)	: -
Magnet weight	: -
Magnet diameter	: -
Mounting cutout	: \varnothing 141 mm
Mounting depth	: 69 mm
Mounting hole diameter	: -
Hole spacing X-axis	: -
Hole spacing Y-axis	: -
Dimensions	: \varnothing 158 mm x 72 mm
Outside diameter	: \varnothing 158 mm
Width	: \varnothing 158 mm



Height	: -
Depth	: 72 mm
Protective class	: -
Admiss. ambient temp.	: 0-40 °C
Weight	: 0.930 kg
Packing unit	: 1
Type of speaker	: 100