

## EDL-412/SW - PA Loudspeaker

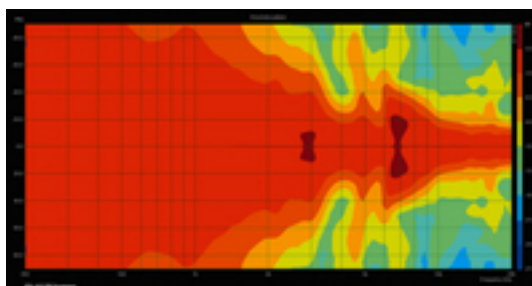
100V

8Ω



IP44

new



Weatherproof PA ball speaker

- 100 V line technique or 8 Ohm operation
- Black ABS housing (self-extinguishing, complies with standard UL 94V-0)
- Supplied with 480 cm connection cable and canopy

## Tekniske data

Active/passive	: passive
Transmission method	: 100 V or low-impedance
Total output power	: -
Power rating (RMS)	: -
Total power rating	: -
Power rating (RMS)	: 10/5/2.5 W
Impedance	: 8 Ohm
Frequency range	: 160-20,000 Hz
THD	: -
S/N ratio	: -
Input signal	: -
System	: -
Full range speaker	: -
Bass speaker	: -
Midrange speaker	: -
Tweeter	: -
Number of speakers	: 1
Speaker size	: -
Sensitivity	: 92 dB/W/m
Max. rated SPL	: -
Beam angle	: -
Radiation angle, horizontal	: -
Radiation angle, vertical	: -
Features	: -
Housing material	: ABS, UL 94V-0
Colour	: black
Mounting device	: cable with canopy
Protected against ball rebound	: -
Protection class	: IP44
Admiss. ambient temp.	: 0-40 °C
Power supply	: -
Dimensions	: 184 mm
Width	: 184 mm
Height	: -
Depth	: -



Weight	: 1.65 kg
Inputs	: -
Outputs	: -
Replacement voice coil	: -
Other features	: -
Accessories	: -
Packing dimensions (W x H x L)	: 0.3 x 0.22 x 0.23 m
Gross weight	: 2 kg
Net weight	: 1.65 kg